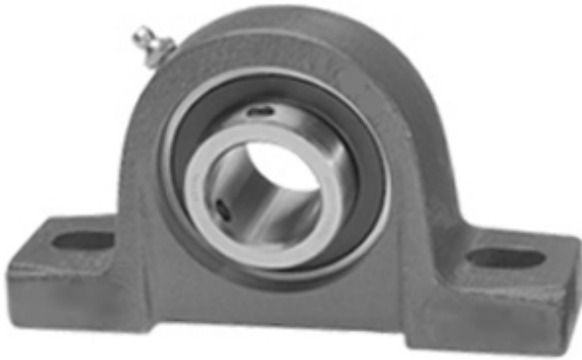




BEARING-MALAYSIA SDN.BHD.

0.984 Inch | 25 Millimeter x 1.339 Inch | 34 Millimeter x 1.437 Inch | 36.5 Millimeter IPTCI UCP 205 25MM L3 Pillow Block Bearings



UCP 205 25MM L3 Bearing 2D drawings and 3D CAD models

Bearing No. UCP 205 25MM L3

Category	Pillow Block Bearings
Inventory	0.0
Manufacturer Name	IPTCI BEARINGS
Minimum Buy Quantity	N/A
Weight	0.907
Product Group	M06110
Number of Mounting Holes	2
Mounting Method	Set Screw
Housing Style	2 Bolt Pillow Block
Rolling Element	Ball Bearing
Housing Material	Cast Iron
Expansion / Non-expansion	Non-expansion
Mounting Bolts	3/8 Inch
Relubricatable	Yes
Insert Part Number	UC205
Seals	L3 Seal
Housing Configuration	1 Piece Solid
Inch - Metric	Metric
Other Features	Single Row Standard Duty Wide Inner Race High Base
Long Description	2 Bolt Pillow Block; 25MM Bore; 36.5MM Base to Center Height; Set Screw Mount; Ball Bearing; Relubricatable; Cast Iron; L3 Seal; Non-expansion



BEARING-MALAYSIA SDN.BHD.

Category	Pillow Block
UNSPSC	31171511
Harmonized Tariff Code	8483.20.40.40
Noun	Bearing
Keyword String	Pillow Block
Manufacturer URL	http://www.iptci.com
Manufacturer Item Number	UCP 205 25MM L3
Weight / LBS	2
d	0.984 Inch 25 Millimeter
D	1.339 Inch 34 Millimeter
Actual Bolt Center to Center	4.1 Inch 105Millimeter
Bolt Spacing Maximum	0 Inch 0Millimeter
B	1.437 Inch 36.5 Millimeter
Nominal Bolt Center to Center	4.1 Inch 105 Millimeter
Bolt Spacing Minimum	0 Inch 0Millimeter